



Diesel All-In-One

All-season protection and performance

AMSOIL Diesel All-In-One (ADB) combines the superior detergency and improved lubricity of AMSOIL Diesel Injector Clean, the excellent cold-flow and anti-gelling properties of AMSOIL Diesel Cold Flow and the increased horsepower and cetane of AMSOIL Cetane Boost in one convenient package, providing the full potency and benefits of all three products. It is safe for use in all diesel fuels, including biodiesel. Diesel All-In-One is specially engineered to provide exceptional all-season protection for a serious performance boost. One dose delivers outstanding detergency, improved lubricity, better cold flow and higher cetane.

Restores Horsepower & Improves Fuel Economy

Fuel injector deposits interrupt spray patterns, causing poor fuel atomization, incomplete combustion, excessive emissions and smoke. High-pressure common-rail fuel systems are common as vehicle manufacturers attempt to produce more power while still meeting tightening emissions standards. In high-pressure common-rail systems, injection pressures can be 30,000 psi and higher to atomize the fuel into a fine mist for more efficient combustion, yielding increased power and fuel economy while reducing emissions. To maintain these high pressures, injector assemblies are highly engineered, with clearances as tight as 1-3 microns (a human hair is typically 70-100 microns thick). Even minimal internal diesel injector deposits on the injector pintal or other components can lead to sticking and even seizure, reducing power, fuel economy and operability. Traditional additive chemistry is not designed to address these tough-to-remove deposits.

Diesel All-In-One features advanced chemistry that delivers concentrated strength to target internal diesel injector deposits and traditional carbonaceous deposits, helping to restore horsepower and operability to like-new condition. Acceleration is improved and, with regular use, Diesel All-In-One continues to enhance performance by keeping injectors clean. The net savings on fuel can result in no additional cost of ownership.

Lubricates Pumps & Injectors to Reduce Wear

Ultra-low-sulfur diesel fuel (ULSD) provides significantly reduced lubricity – a critical property in controlling wear in fuel pumps and injectors. Diesel All-In-One adds the lubricity the fuel pump and injectors need, reducing wear, improving service life and saving time and money on maintenance costs.

Improves Fuel Quality for Peak Performance

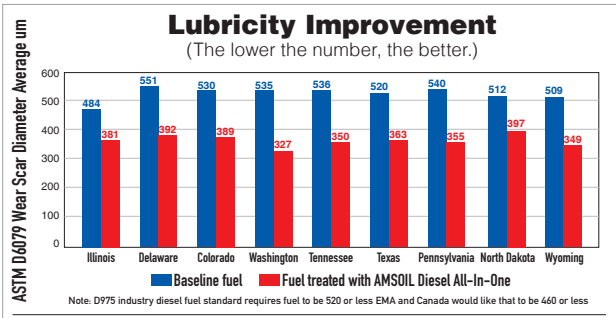
Fuel with a higher cetane number provides for a more complete burn, resulting in improved performance. By increasing cetane, Diesel All-In-One improves the ignition quality of diesel fuel, maximizing available power and improving starting. It also smooths idle and reduces smoke and emissions.

Helps Prevent Gelling

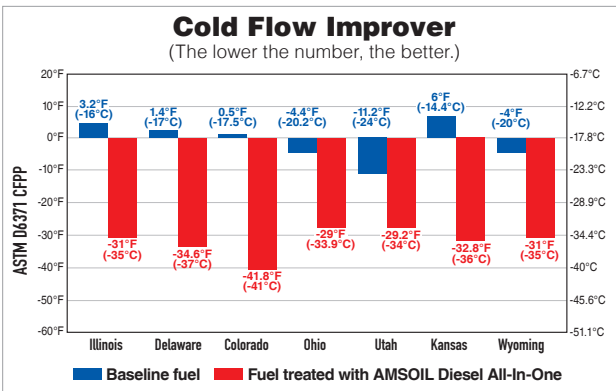
As the temperature drops, the wax naturally found in diesel fuel begins to crystallize. The point at which wax crystals form is known as the cloud point. These wax crystals eventually clog the fuel filter and starve the engine of fuel, preventing it from starting. While low-quality fuels may form wax crystals in temperatures as warm as 40°F (4°C), most fuels have a cloud point near 32°F (0°C). The point at which the crystals clog the fuel filter is known as the cold filter-plugging point (CFPP). Diesel All-In-One lowers the CFPP by up to 40°F (22°C) in ULSD.



- **Cleans** dirty injectors
- **Lubricates** pumps and injectors to reduce wear
- **Extends** fuel-filter life
- **Improves** fuel economy up to 8%
- **Combats** fuel-system corrosion
- **Prevents** wax settling during storage
- **Lowers** cold filter-plugging point (CFPP) by up to 40°F (22°C)
- **Delivers** maximum horsepower
- **Increases** cetane up to 4 points
- **Safe for use** in all diesel fuels, including biodiesel
- **Alcohol-free**

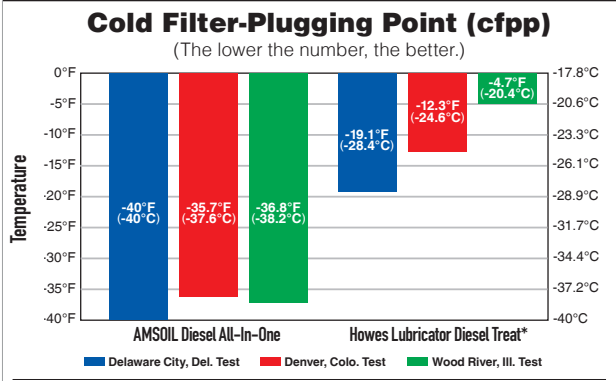


The ASTM D975 diesel fuel standard specifies a wear scar below 520 µm in ASTM D6079 testing, while the Engine Manufacturers Association (EMA) specifies a wear scar below 460 µm. Testing reveals AMSOIL Diesel All-In-One provides significant lubricity improvement in diesel fuels found across the U.S., delivering improved wear protection.



Testing reveals AMSOIL Diesel All-In-One provides significant cold-flow improvement in diesel fuels found across the U.S., delivering improved cold-weather performance.

SUPERIOR COLD-TEMPERATURE PROTECTION
 Provides as much as **32°F (18°C) better protection** against cold temperature gelling than Howes Lubricator Diesel Treat.^M
 Plus raises cetane up to 4 points.

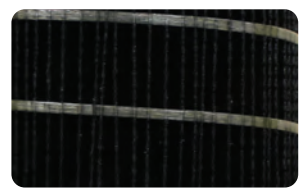


^MBased on third-party testing in July 2017 of AMSOIL Diesel All-In-One and Howes Lubricator Diesel Treat using diesel fuel representative of the U.S. marketplace and Howes' recommended treat ratio for above 0°F (-17.8°C.)

*All trademarked names and images are the property of their respective owners and may be registered marks in some countries. No affiliation or endorsement claim, express or implied, is made by their use.

Extends Filter Life

Modern diesel engines run hot, raising the temperature of the fuel returned to the tank and causing carbonaceous deposits that collect in the fuel filter (see picture), plugging it and causing premature failure issues. Diesel All-In-One effectively protects against deposits, extending fuel filter life.



RECOMMENDATIONS

Diesel All-In-One is recommended for use with all types of heavy- and light-duty, on- or off-road and marine diesel engines. Add before filling tank. Diesel All-In-One must be added at temperatures above the diesel fuel cloud point (the temperature at which wax begins to crystallize). It will not reverse gel or wax crystals once formed.

ADDITIVE	MAINTENANCE	FUEL VOLUME
	Up to 4-point cetane increase	
	2 oz. (59.1 ml)	5 gal. (18.9 L)
	4 oz. (118.3 ml)	10 gal. (37.9 L)
	8 oz. (236.6 ml)	20 gal. (75.7 L)
	12 oz. (354.9 ml)	30 gal. (113.6 L)
	16 oz. (473.2 ml)	40 gal. (151.4 L)
	64 oz. (1.9 L)	160 gal. (605.7 L)

PRODUCT WARRANTY

AMSOIL products are backed by a Limited Liability Warranty. For complete information visit AMSOIL.com/warranty.aspx.



◀ High-Pressure Common-Rail Fuel Injector Pintal



◀ Traditional Fuel Injector Pintal

Fuel injectors in high-pressure common-rail diesel engines use smaller, highly engineered components to produce the higher fuel pressures needed for improved combustion. The tighter clearances invite internal diesel injector deposits that interfere with injector needle actuation, reducing performance. External deposits can also form on the injector nozzle (the typical trouble spot for traditional injectors). While many other fuel additives have yet to catch up to the internal diesel injector deposit problem, AMSOIL Diesel All-In-One targets deposits wherever they form, maximizing power, fuel economy and performance in high-pressure common-rail and traditional diesel engines.



AMSOIL products and Dealership information are available from your local full-service AMSOIL Dealer.





Diesel Injector Clean + Cetane Boost

Defend your diesel

AMSOIL Diesel Injector Clean + Cetane Boost (ADS) combines the superior detergency and improved lubricity of AMSOIL Diesel Injector Clean and the increased horsepower and cetane of AMSOIL Cetane Boost in one convenient package. Diesel Injector Clean + Cetane Boost is specially engineered to defend your engine and fuel system against performance-robbing wear and deposits. Its concentrated formula provides dependable protection in warm weather. One dose delivers outstanding detergency, improved lubricity and higher cetane. It is safe for use in all diesel fuels, including biodiesel.

Restores Horsepower & Improves Fuel Economy

Fuel injector deposits interrupt spray patterns, causing poor fuel atomization, incomplete combustion, excessive emissions and smoke. High-pressure common-rail fuel systems are becoming commonplace as vehicle manufacturers attempt to produce more power while still meeting tightening emissions standards. In high-pressure common-rail systems, injection pressures can be 30,000 psi and higher to atomize the fuel into a fine mist for more efficient combustion, yielding increased power and fuel economy while reducing emissions. To maintain these high pressures, injector assemblies are highly engineered, with clearances as tight as 1-3 microns (a human hair is typically 70-100 microns thick). Even minimal internal diesel injector deposits on the injector pintal or other components can lead to sticking and even seizure, reducing power, fuel economy and operability. Traditional additive chemistry is not designed to address these tough-to-remove deposits.

Diesel Injector Clean + Cetane Boost features advanced chemistry that delivers concentrated strength to target internal diesel injector deposits and traditional carbonaceous deposits, helping to restore horsepower and operability to like-new condition. Acceleration is improved and, with regular use, Diesel Injector Clean + Cetane Boost continues to enhance performance by keeping injectors clean. The net savings on fuel can result in no additional cost of ownership.

Lubricates Pumps & Injectors to Reduce Wear

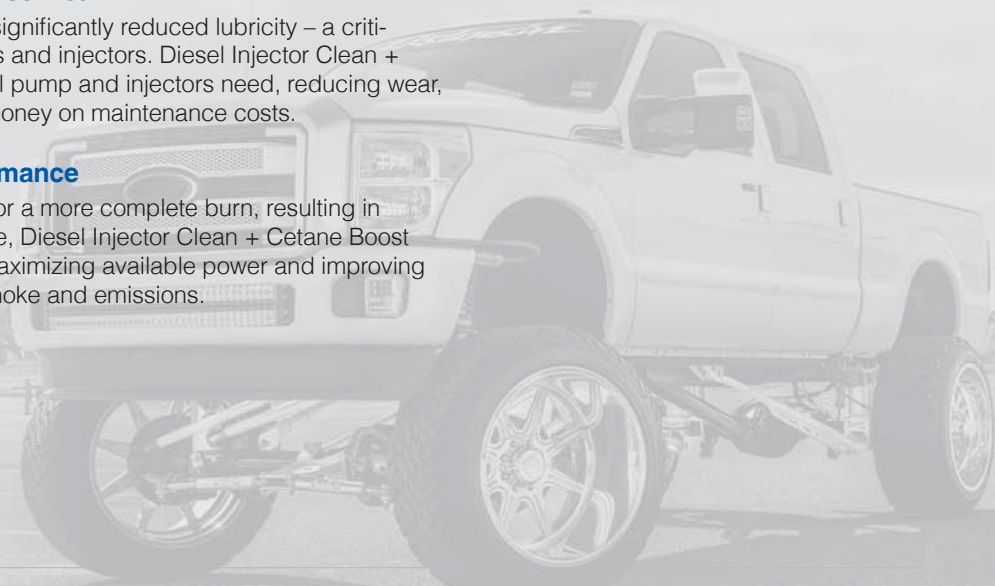
Ultra-low-sulfur diesel fuel (ULSD) provides significantly reduced lubricity – a critical property in controlling wear in fuel pumps and injectors. Diesel Injector Clean + Cetane Boost adds back the lubricity the fuel pump and injectors need, reducing wear, improving service life and saving time and money on maintenance costs.

Improves Fuel Quality for Peak Performance

Fuel with a higher cetane number provides for a more complete burn, resulting in improved performance. By increasing cetane, Diesel Injector Clean + Cetane Boost improves the ignition quality of diesel fuel, maximizing available power and improving starting. It also smooths idle and reduces smoke and emissions.

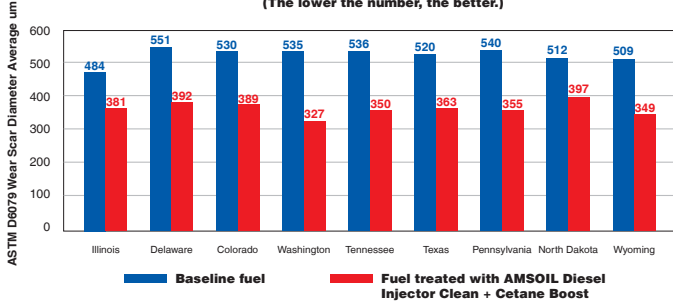


- **Cleans** dirty injectors
- **Lubricates** pumps and injectors to reduce wear
- **Increases** cetane up to 8 points
- **Extends** fuel-filter life
- **Improves** fuel economy up to 8%
- **Combats** fuel-system corrosion
- **Delivers** maximum horsepower
- **Safe for use** in all diesel fuels, including biodiesel
- **Alcohol-free**



Lubricity Improvement

(The lower the number, the better.)



The ASTM D975 diesel fuel standard specifies a wear scar below 520 µm in ASTM D6079 testing, while the Engine Manufacturers Association (EMA) specifies a wear scar below 460 µm. Testing reveals AMSOIL Diesel Injector Clean + Cetane Boost provides significant lubricity improvement in diesel fuels found across the U.S., delivering improved wear protection.

Extends Filter Life

Modern diesel engines run hot, raising the temperature of the fuel returned to the tank and causing carbonaceous deposits that collect in the fuel filter (see picture), plugging it and causing premature failure issues. Diesel Injector Clean + Cetane Boost effectively protects against deposits, extending fuel filter life.



RECOMMENDATIONS

Diesel Injector Clean + Cetane Boost is recommended for use with all types of heavy- and light-duty, on- or off-road and marine diesel engines. Add before filling tank. **Initial use:** follow clean-up recommendation. **Subsequent uses/regular treatment:** follow maintenance recommendation. To prevent cold-weather fuel issues, add AMSOIL Diesel Cold Flow or switch to AMSOIL Diesel All-In-One.

Use this treat rate chart for the 16-oz., 64-oz. and larger package sizes of AMSOIL Diesel Injector Clean + Cetane Boost

CLEAN-UP	MAINTENANCE	FUEL VOLUME
2 oz. of additive 8-point cetane increase	1 oz. of additive 4-point cetane increase	5 gal.

Use this treat rate chart for the 8-oz. size of AMSOIL Diesel Injector Clean + Cetane Boost

CLEAN-UP	MAINTENANCE	FUEL VOLUME
2 Bottles 8-point cetane increase	1 Bottle 4-point cetane increase	Up to 20 gal.

PRODUCT WARRANTY

AMSOIL products are backed by a Limited Liability Warranty. For complete information visit www.amsoil.com/warranty.aspx.

High-Pressure Common-Rail Fuel Injector Pintal



Traditional Fuel Injector Pintal



Fuel injectors in high-pressure common-rail diesel engines use smaller, highly engineered components to produce the higher fuel pressures needed for improved combustion. The tighter clearances invite internal diesel injector deposits that interfere with injector needle actuation, reducing performance. External deposits can also form on the injector nozzle (the typical trouble spot for traditional injectors). While many other fuel additives have yet to catch up to the internal diesel injector deposit problem, AMSOIL Diesel Injector Clean + Cetane Boost targets deposits wherever they form, maximizing power, fuel economy and performance in high-pressure common-rail and traditional diesel engines.



AMSOIL products and Dealership information are available from your local full-service AMSOIL Dealer.



Diesel Injector Clean

Cleans and Protects

AMSOIL Diesel Injector Clean (ADF/ADFP) removes performance-robbing deposits from diesel fuel injectors to help restore horsepower and improve fuel economy. It is formulated for all types of diesel engines, including high-pressure common-rail designs. Diesel Injector Clean is formulated to clean both the tough-to-remove internal diesel injector deposits surfacing in modern high-pressure common-rail diesel engines and traditional carbonaceous deposits. Diesel Injector Clean delivers confidence in your diesel's performance. Its concentrated formula uses unique chemistry to target and eliminate specific performance issues, maximizing diesel power.

Helps Restore Horsepower & Improve Fuel Economy

Fuel injector deposits interrupt spray patterns, causing poor fuel atomization, incomplete combustion, excessive emissions and smoke. High-pressure common-rail fuel systems are becoming commonplace as vehicle manufacturers attempt to produce more power while still meeting tightening emissions standards. In high-pressure common-rail systems, injection pressures can be 30,000 psi and higher to atomize the fuel into a fine mist for more efficient combustion, yielding increased power and fuel economy while reducing emissions. To maintain these high pressures, injector assemblies are highly engineered, with clearances as tight as 1-3 microns (a human hair is typically 70-100 microns thick). Even minimal internal diesel injector deposits on the injector pintal or other components can lead to sticking and even seizure, reducing power, fuel economy and operability. Traditional additive chemistry is not designed to address these tough-to-remove deposits.

Diesel Injector Clean features advanced chemistry that delivers concentrated strength to target internal diesel injector deposits and traditional carbonaceous deposits, helping to restore horsepower and operability to like-new condition. Acceleration is improved and, with regular use, Diesel Injector Clean continues to enhance performance by keeping injectors clean. The net savings on fuel can result in no additional cost of ownership.

Lubricates Pumps & Injectors to Reduce Wear

Ultra-low-sulfur diesel fuel (ULSD) provides significantly reduced lubricity – a critical property in controlling wear in fuel pumps and injectors. Diesel Injector Clean adds back the lubricity the fuel pump and injectors need, reducing wear, improving service life and saving time and money on maintenance costs.

Minimizes Soot-Loading

Diesel Injector Clean's powerful formula cleans fuel injectors and piston rings for improved combustion and better sealing. It minimizes soot generated from incomplete combustion and helps keep soot out of the crankcase, reducing soot-related wear and engine oil viscosity increase.

Separates Fuel and Water

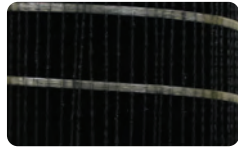
Diesel Injector Clean is an alcohol-free product that protects fuel systems against water contamination. It helps prevent fuel/water emulsions so that separating filters can safely remove water before it reaches the injectors, where it can cause corrosion. Water can be drained easier, ensuring drivability.



- **Cleans** dirty injectors
- **Lubricates** pumps and injectors to reduce wear
- **Extends** fuel-filter life
- **Improves** fuel economy up to 8%
- **Restores** power and torque
- **Reduces** smoke and emissions
- **Helps** prolong time between EGR and DPF regenerations
- **Combats** fuel-system corrosion
- **Reduces** downtime and maintenance costs
- **Safe for use** in all diesel fuels, including biodiesel
- **Alcohol-free**

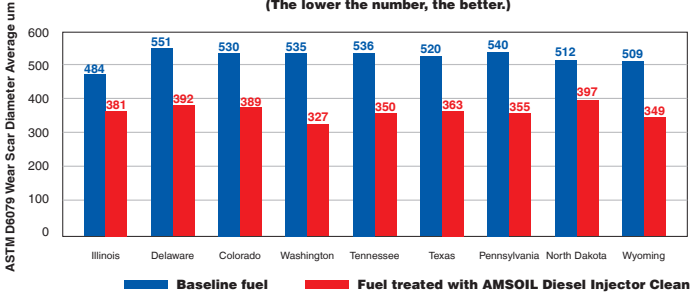
Extends Filter Life

Modern diesel engines run hot, raising the temperature of the fuel returned to the tank and causing carbonaceous deposits that collect in the fuel filter (see picture), plugging it and causing premature failure issues. AMSOIL Diesel Injector Clean effectively protects against deposits, extending fuel filter life.



Lubricity Improvement

(The lower the number, the better.)



The ASTM D975 diesel fuel standard specifies a wear scar below 520 µm in ASTM D6079 testing, while the Engine Manufacturers Association (EMA) specifies a wear scar below 460 µm. Testing reveals AMSOIL Diesel Injector Clean provides significant lubricity improvement in diesel fuels found across the U.S., delivering improved wear protection.

RECOMMENDATIONS

Diesel Injector Clean is recommended for use with all types of heavy- and light-duty, on- or off-road and marine diesel engines. For initial use, follow the Clean-Up recommendation; use Maintenance dose for regular treatment. Use with every tank of fuel for best performance and protection against fuel-pump wear, injector wear and injector deposits. Compatible with all types of exhaust emission systems, including diesel particulate filters (DPFs). Add to fuel before storage. Excellent for use with AMSOIL Diesel Cetane Boost and AMSOIL Diesel Cold Flow.

AMSOIL Diesel Injector Clean

Use this treat rate chart for the 16-oz., 64-oz. and larger package sizes of AMSOIL Diesel Injector Clean.

CLEAN-UP	MAINTENANCE	FUEL VOLUME
2 oz.	1 oz.	5 Gal.
4 oz.	2 oz.	10 Gal.
12 oz.	6 oz.	30 Gal.
32 oz.	16 oz.	80 Gal.

Use this treat rate chart for the 8-oz. size of AMSOIL Diesel Injector Clean.

CLEAN-UP	MAINTENANCE	FUEL VOLUME
2 Bottles	1 Bottle	Up to 20 Gal.

AMSOIL PRODUCT WARRANTY

AMSOIL products are backed by a Limited Liability Warranty. For complete information visit AMSOIL.com/warranty.aspx.

High-Pressure Common-Rail Fuel Injector Pintal



Fuel injectors in high-pressure common-rail diesel engines use smaller, highly engineered components to produce the higher fuel pressures needed for improved combustion. The tighter clearances invite internal diesel injector deposits that interfere with injector needle actuation, reducing performance. External deposits can also form on the injector

Traditional Fuel Injector Pintal



nozzle (the typical trouble spot for traditional injectors). While many other fuel additives have yet to catch up to the internal diesel injector deposit problem, AMSOIL Diesel Injector Clean targets deposits wherever they form, maximizing power, fuel economy and performance in high-pressure common-rail and traditional diesel engines.



AMSOIL products and Dealership information are available from your local full-service AMSOIL Dealer.





Diesel Cetane Boost Serious Performance Boost

AMSOIL Diesel Cetane Boost (ACB) raises the cetane number of diesel fuel up to eight points for maximum horsepower, increased fuel economy and easier starts in all diesel engines. Diesel engines operate best on fuel with cetane values of 50 or higher. Most diesel fuel sold in North America has a cetane value of 40-45. Diesel Cetane Boost delivers confidence in your diesel's performance. Its concentrated formula uses unique chemistry to target and eliminate specific performance issues, maximizing diesel power.

Improves Fuel Quality for Peak Performance

Fuel with a higher cetane number provides for a more complete burn, resulting in improved performance. By increasing cetane, Diesel Cetane Boost improves the ignition quality of diesel fuel, maximizing available power and improving starting. It also smooths idle and reduces smoke and emissions.

Recommendations

Diesel Cetane Boost is recommended for use in all types of heavy- and light-duty, on- and off-road and marine diesel engines. Best performance is achieved when used with every tank of fuel. Excellent for use with ultra-low-sulfur diesel fuel (ULSD). Compatible with biodiesel and all types of exhaust emission systems, including diesel particulate filters (DPFs). Follow the chart below. Add before filling tank. Excellent for use with AMSOIL Diesel Injector Clean and AMSOIL Diesel Cold Flow.

	4-POINT INCREASE	8-POINT INCREASE	FUEL VOLUME
ADDITIVE	—	1 oz.	5 gal.
	1 oz.	2 oz.	10 gal.
	3 oz.	6 oz.	30 gal.
	8 oz.	16 oz.	80 gal.

Technical Services

For immediate answers to your technical questions call (715) 399-TECH (8324) between 8 a.m. and 5 p.m. Central time or email tech@AMSOIL.com.

HEALTH & SAFETY

This product is not expected to cause health concerns when used for the intended application and according to the recommendations in the Safety Data Sheet (SDS). An SDS is available at AMSOIL.com or upon request at (715) 392-7101.
Keep Out of Reach of Children.

PRODUCT WARRANTY

AMSOIL products are backed by a Limited Liability Warranty. For complete information visit www.AMSOIL.com/warranty.aspx.



- **Increases** cetane up to 8 points
- **Delivers** maximum horsepower
- **Increases** fuel economy
- **Improves** startability
- **Smooths** idle
- **Reduces** smoke & emissions
- **Safe for use** in all diesel fuels, including biodiesel
- **Alcohol-free**



AMSOIL products and Dealership information are available from your local full-service AMSOIL Dealer.



Diesel Cold Flow

Combats fuel gelling in cold weather

AMSOIL Diesel Cold Flow (ADD) combats diesel fuel gelling by improving diesel cold-flow ability. It is formulated with an advanced deicer to enhance fuel flow and help prevent fuel filter plugging in cold temperatures. Diesel Cold Flow is formulated for a broad range of diesel fuels, including biodiesel and #1 and #2 ultra-low-sulfur diesel (ULSD). Diesel Cold Flow delivers confidence in your diesel's performance. Its concentrated formula uses unique chemistry to target and eliminate specific performance issues, maximizing diesel power.

Reduces Need for #1 Diesel Fuel

Using #1 diesel fuel is one traditional solution to cold-weather diesel fuel problems. While #1 diesel fuel has an advantage in low-temperature operability, the energy content of #1 diesel fuel is about 95 percent that of #2 diesel fuel, resulting in reduced fuel economy and less horsepower, and it costs more at the pump. Diesel Cold Flow minimizes the need for blending standard #2 diesel fuel with #1 diesel fuel, helping to maintain fuel economy and keep engines functioning normally.

Helps Prevent Gelling

As the temperature drops, the wax naturally found in diesel fuel begins to crystallize. The point at which wax crystals form is known as the cloud point. These wax crystals eventually clog the fuel filter and starve the engine of fuel, preventing it from starting. While low-quality fuels may form wax crystals in temperatures as warm as 40°F (4°C), most fuels have a cloud point near 32°F (0°C). The point at which the crystals clog the fuel filter is known as the cold filter-plugging point (CFPP). Diesel Cold Flow lowers the CFPP by up to 40°F (22°C) in ULSD.

Prevents Wax Settling

Wax crystals can settle and clog fuel filters (see picture). AMSOIL Diesel Cold Flow is formulated with wax anti-settling additives that drastically reduce the size of wax crystals, preventing them from settling and allowing them to more effectively pass through the filter, improving low-temperature operability.



- **Lowers** cold filter-plugging point (CFPP) by up to 40°F
- **Enhances** engine reliability in cold temperatures
- **Fights** gelling in cold weather
- **Improves** low-temperature startability
- **Prevents** wax settling during storage
- **Inhibits** fuel-filter icing
- **Safe for use** in all diesel fuels, including biodiesel
- **Reduces** downtime and maintenance costs
- **Alcohol-free**



AMSOIL Diesel Cold Flow

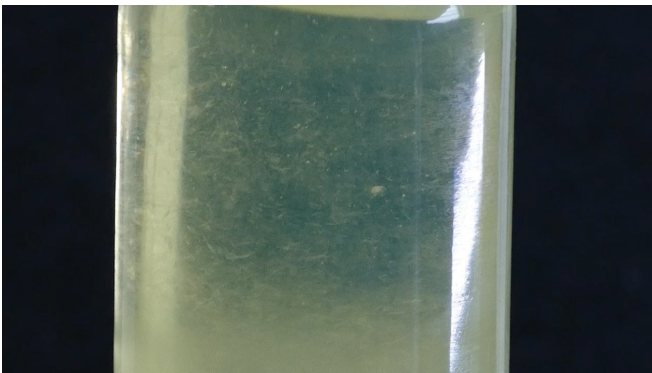
lowers the cold filter-plugging point (CFPP) by up to 40°F (22°C) in ULSD.



Wax formation in untreated diesel fuel resists pouring.



Wax formation in untreated diesel fuel plugs a coffee filter.



Wax crystals in untreated diesel fuel. The wax crystals will eventually fall out of solution and plug the fuel filter.

APPLICATIONS

Diesel Cold Flow is specially formulated for improving the flow of diesel fuel, helping to maintain the integrity of fuel and prevent the clogging of filters and injectors. It is excellent for use with diesel fuels, heating oils and kerosene.

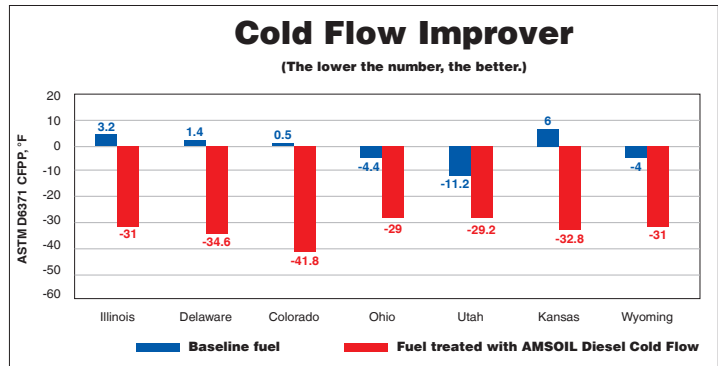
RECOMMENDATIONS

Add before filling tank. Diesel Cold Flow must be added at temperatures above the diesel fuel cloud point (the temperature at which wax begins to crystallize). It will not reverse gel or wax crystals once formed. Do not store at temperatures below 0°F (-18°C). Excellent for use with AMSOIL Cetane Boost and AMSOIL Diesel Injector Clean.

ADDITIVE	MAINTENANCE	FUEL VOLUME
	1 oz.	5 gal.
	2 oz.	10 gal.
	6 oz.	30 gal.
	16 oz.	80 gal.

AMSOIL PRODUCT WARRANTY

AMSOIL products are backed by a Limited Liability Warranty. For complete information visit www.amsoil.com/warranty.aspx.



Testing reveals AMSOIL Diesel Cold Flow provides significant cold-flow improvement in diesel fuels found across the U.S., delivering improved cold-weather performance.



AMSOIL products and Dealership information are available from your local full-service AMSOIL Dealer.



Diesel Recovery

Emergency Fuel Treatment for Gelled Diesel Fuel

AMSOIL Diesel Recovery (DRC) is an emergency diesel fuel treatment that dissolves the wax crystals that form when diesel fuel has surpassed its cloud point. Diesel Recovery liquefies gelled diesel fuel and thaws frozen fuel filters, avoiding costly towing charges and getting diesels back on the road.

For preventative maintenance, use Diesel Cold Flow (ADD) or Diesel All-In-One (ADB).

Fast Fuel Recovery

Diesel applications operating in extremely cold environments face some unique challenges. As the temperature drops, wax naturally found in diesel fuel begins to form crystals. The point at which wax crystals form is known as the cloud point. These wax crystals can eventually clog the fuel filter and starve the engine of fuel, preventing it from starting or even stalling out a running engine.

Diesel Recovery quickly dissolves gelled fuel to allow the operator to continue driving with minimal downtime. Diesel Recovery separates the molecular bonds of wax crystals that have agglomerated in diesel fuel. It thaws frozen fuel filters and reduces the need for a new filter, saving money and preventing an inconvenient trip to an auto parts store.

Works Well in Many Diesel Blends

The marketplace offers many different diesel fuels, all with varying quality. Diesel Recovery performs well in all diesel fuels, including ULSD, off-road and biodiesel.

Non-Corrosive, Alcohol-Free Formulation

Over extended use, alcohol has a tendency to degrade components of some fuel delivery systems. Diesel Recovery contains no alcohol, making it safe for repeated treatments. In addition, Diesel Recovery is non-corrosive and contains no chemicals that interact with fuel system components. Corrosion can damage fuel system components and lead to prematurely-clogged fuel filters.

Safety in a Bottle

Diesel fuel quality varies from one filling station to the next, and low-quality fuel can have a cloud point as high as 40°F. Keeping a bottle of Diesel Recovery on-board is cheap insurance against being towed to a service station or getting stranded somewhere in subzero temperatures.

PRODUCT WARRANTY

AMSOIL products are backed by a Limited Liability Warranty. For complete information visit www.amsoil.com/warranty.aspx.



- Quickly Dissolves Gelled Fuel
- Thaws Frozen Fuel Filters
- Performs Well in ULSD, Off-Road & Biodiesel
- Alcohol-Free
- Non-Corrosive

RECOMMENDATIONS

One 30 oz. bottle of Diesel Recovery treats up to 30 gallons of fuel. When encountering a gelled fuel system, follow these steps for maximum effectiveness:

1. Remove existing fuel filter.
2. Fill fuel filter with Diesel Recovery.
3. Reinstall fuel filter.
4. Add remaining Diesel Recovery to fuel tank. If necessary, add more as required by treat rate recommendations.
5. Start engine and allow fuel system to circulate until full power has been restored. Note: For even quicker restoration of power, install new fuel filter instead of using existing filter.

AMSOIL products and Dealership information are available from your local full-service AMSOIL Dealer.

Referral # **779**

Vaughn Enterprises, Inc.

Call Greg Vaughn at **1-800-581-5823**

3508 W. Pine Street,

Appleton, Wisconsin, 54914, USA

Fax: 920-734-5823

greg@VaughnInc.com

<https://www.VaughnInc.com/>

